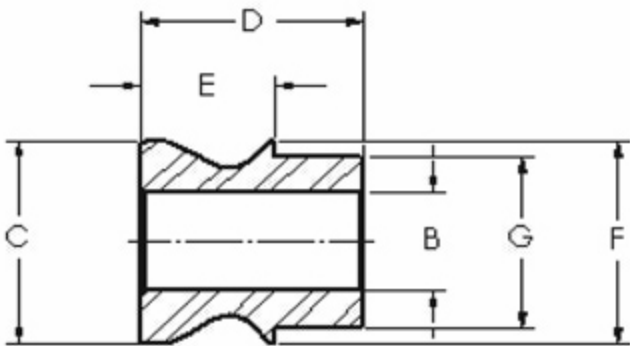


-HB HIGH MISALIGNMENT BUSHINGS



MATERIAL

17-4PH
STAINLESS
STEEL

PART NUMBER	B	C	D	E	F	G	BEARING SIZE
8-6HB	.3750	.645	.627	.342	.667	.499	8
10-8HB	.5000	.840	.900	.530	.795	.624	10
10-8HB-2	.5000	.840	1.620	1.250	.795	.624	10
12-8HB	.5000	.995	.900	.475	.930	.749	12
12-10HB	.6250	.995	.900	.475	.930	.749	12
14-8HB	.5000	1.040	1.055	.625	1.035	.874	RSMX14T
14-10HB	.6250	1.050	1.055	.625	1.035	.874	JMX14T-770
14-12HB	.7500	1.050	1.242	.812	1.035	.874	KMX14
16-10HB	.6250	1.245	1.497	.817	1.225	.999	16
16-10HB-2	.6250	1.135	1.370	.690	1.225	.999	16
16-12HB	.7500	1.135	1.370	.690	1.225	.999	16

- NOTES:
1. ALL DIMENSIONS ARE IN INCHES.
 2. MISALIGNMENT BUSHINGS INCREASE MISALIGNMENT ANGLE AND REDUCE HOLE SIZES IN ROD ENDS AND SPHERICAL BEARINGS.
 3. ALL BUSHINGS ARE SOLD IN PAIRS.
 4. MISALIGNMENT BUSHINGS ARE DESIGNED FOR ROD ENDS ONLY. WILL NOT WORK ON SPHERICAL BEARINGS. (WILL NOT FIT SJM/SRSM, PMX SERIES OR JMX14 ROD ENDS)