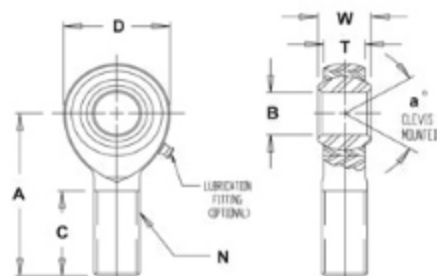


JM / JML 3-PIECE, PRECISION-WEAR RESISTANT / PTFE LINERS AVAILABLE

MATERIALS
BALL
BODY
RACE

 52100
STEEL

 LOW
CARBON
STEEL

 STEEL ALLOY,
HEAT TREATED

 Rc 56 MIN.
HARD

 ZINC
PLATED

ZINC PLATED

 HARD
CHROME
PLATED

 CHROMATE
TREATED

 CHROMATE
TREATED

MALE ROD ENDS		B	D	W	T	BALL	A	N	C	a°	ULT. STATIC RADIAL LOAD (lbs.)	APPROX. WEIGHT (lbs.)
RIGHT HAND PART NO.	LEFT HAND PART NO.	DIA.	DIA.	WIDTH	WIDTH	DIA.	LGTH	THD.	LGTH	MIS ANGLE		
JM2*	JML2*	.1250	.500	.250	.187	.312	.937	6-32 UNC	.562	16	500	.013
JM3	JML3	.1900	.625	.312	.250	.437	1.250	10-32	.750	13	1,174	.03
JM4	JML4	.2500	.750	.375	.281	.500	1.562	1/4-28	1.000	16	2,168	.04
JM5	JML5	.3125	.875	.437	.344	.625	1.875	5/16-24	1.250	14	2,796	.07
JM6	JML6	.3750	1.000	.500	.406	.719	1.938	3/8-24	1.250	12	4,012	.11
JM7	JML7	.4375	1.125	.562	.437	.812	2.125	7/16-20	1.375	14	4,244	.16
JM8	JML8	.5000	1.312	.625	.500	.937	2.438	1/2-20	1.500	12	6,700	.25
JM10	JML10	.6250	1.500	.750	.562	1.125	2.625	5/8-18	1.625	16	7,400	.38
JM12	JML12	.7500	1.750	.875	.687	1.312	2.875	3/4-16	1.750	14	11,550	.60
JM16**	JML16	1.0000	2.950	1.375	1.015	1.875	4.125	1-1/4-12	2.500	17	43,555	2.406
JM16-1**	JML16-1**	1.0000	2.950	1.375	1.015	1.875	4.125	1-14	2.500	17	43,555	2.127
JM16-2**	JML16-2**	1.0000	2.950	1.375	1.015	1.875	4.125	1-12	2.500	17	43,555	2.127

MALE ROD END LOAD RATINGS BASED ON NO LUBRICATION FITTING. FOR LOAD RATINGS OF ROD ENDS WITH LUBRICATOR, PLEASE CONTACT THE F.K. ENGINEERING DEPARTMENT.
NOTES:

*GREASE FITTINGS & PTFE LINERS NOT AVAILABLE.

** TOLERANCE VARIATION: "D", "A" ARE +/- .020

FOR GREASE FITTINGS ADD "Z" TO SUFFIX. ~EXAMPLE: JM6Z

FOR STUDS ADD "Y" TO SUFFIX. ~EXAMPLE: JM5Y

FOR PTFE LINER ADD "T" TO SUFFIX. ~EXAMPLE: JM12T