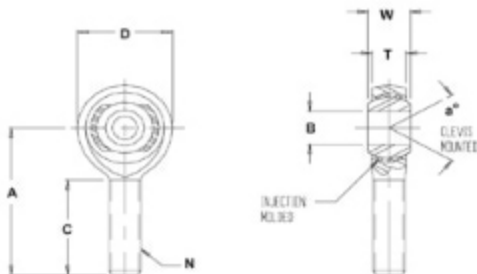


KMX / KMXL 3-PIECE, ALLOY STEEL, HEAT TREATED - NYLON RACE

MATERIALS
BALL
BODY
RACE

 52100
STEEL

 ALLOY
STEEL

 Rc 56 MIN.
HARD

 HEAT
TREATED

 HARD
CHROME
PLATED

 CHROME
PLATED

 NYLON 10
OR
EQUIVALENT

**MALE ROD
ENDS**

RIGHT HAND PART NO.	LEFT HAND PART NO.	B DIA.	D DIA.	W WIDTH	T WIDTH	BALL DIA.	A LGTH	N THD.	C LGTH	a° MIS. ANGLE	ULT. STATIC RADIAL LOAD (lbs)	APPROX. WEIGHT (lbs)
		+ .0025 - .0005	+ .010 - .010	+ .005 - .005	+ .005 - .005	REF.	+ .015 - .015	UNF 3A	+ .062 - .031	REF.		
KMX5	KMXL5	.3125	.875	.437	.344	.625	1.875	5/16-24	1.250	14	7,600	0.07
KMX5-6	KMXL5-6	.3125	.875	.437	.344	.625	1.875	3/8-24	1.250	14	7,600	0.07
KMX6	KMXL6	.3750	1.000	.500	.406	.719	1.938	3/8-24	1.250	12	9,500	0.11
KMX6-5	KMXL6-5	.3125	1.000	.437	.344	.625	1.938	3/8-24	1.250	12	10,382	0.11
KMX8	KMXL8	.5000	1.312	.625	.500	.937	2.438	1/2-20	1.500	12	12,696	.24
KMX10-8	KMXL10-8	.5000	1.500	.625	.500	.937	2.625	5/8-18	1.625	12	19,960	.36
KMX10	KMXL10	.6250	1.500	.750	.562	1.125	2.625	5/8-18	1.625	16	14,480	.36
KMX12-8	KMXL12-8	.5000	1.750	.750	.562	1.125	2.875	3/4-16	1.750	14	23,256	.57
KMX12-10	KMXL12-10	.6250	1.750	.750	.562	1.125	2.875	3/4-16	1.750	14	23,256	.57
KMX12	KMXL12	.7500	1.750	.875	.687	1.312	2.875	3/4-16	1.750	14	23,192	.57
KMX14	KMXL14	.8750	2.000	.875	.770	1.375	3.375	7/8-14	2.000	12	45,051	.88
KMX16	KMXL16	1.0000	2.750	1.375	1.000	1.875	4.125	1.250-12	2.125	17	76,200	2.41

FOR STUDS ADD "Y" TO SUFFIX. EXAMPLE: KMX10Y